

What a Waste!

INDUSTRIALISING NUTRIENT RECOVERY

Across N, P, K: From Concept to Industry

Ehsan Moslehi

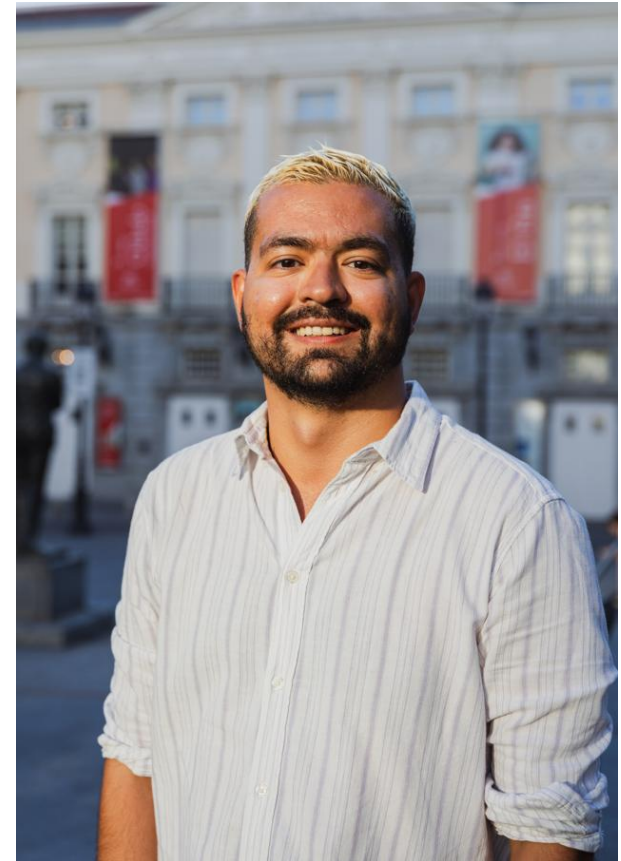
R&D Engineer at EasyMining

(+Industrial PhD — Swedish University of Agriculture & EasyMining)

Chemical Engineering background (KTH)

5 years at EasyMining

From phosphorus → to potassium



Company Facts

70+
EMPLOYEES

2007
YEAR OF FOUNDATION

Uppsala • Gothenburg • Berlin
OFFICES

Part of Ragn-Sells Group since 2014
Majority shareholder of
Phosphorgewinnung Schkopau GmbH

“Technologies that create true circularity are the only solution for ensuring that the Earth’s vital resources do not run out.

This is what EasyMining is all about.”

Jan Svärd, CEO EasyMining

Our business idea

We develop, design and build patented processes, and operate plants to produce clean, commercial products from waste.



Our key processes convert waste to products



AQUA2™ N

Removes and recovers ammonium nitrogen from wastewater streams.



ASH2™ PHOS

Extracts phosphorus and other resources from sewage sludge ash.



ASH2™ SALT

Extracts commercial-grade potassium, sodium and calcium salts from fly ash.

AQUA2™N

Ready for commercialisation

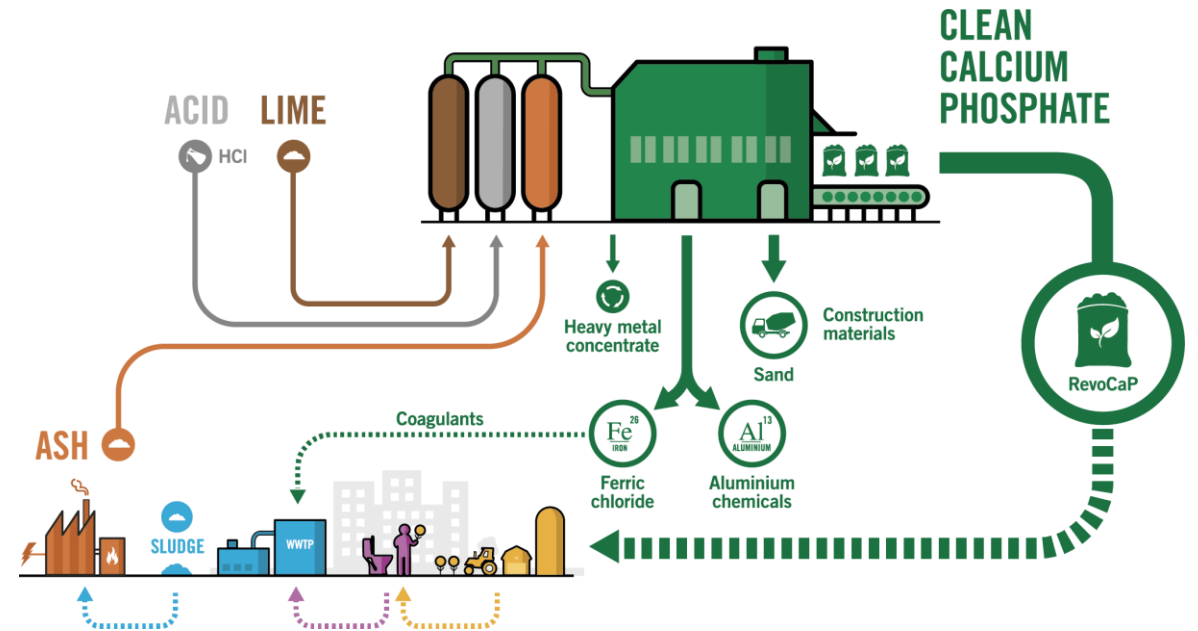
- In the EU LIFE RE-Fertilize project the process was demonstrated and product evaluated
 - Tested at Demo scale in Stockholm and Copenhagen
 - Capacity of demonstration plant: 4 m³/h
 - Nitrogen product evaluated by Lantmännen, a Swedish agriculture cooperation
- With successful demonstration and validation completed, we are now opening up for customer partnerships and implementation.
- EasyMining provides the equipment free of charge, while foundations, connections and consumable chemicals must be provided by the customer



ASH2™ PHOS

Extracts phosphorus and other resources

- Input material is sewage sludge ash from wastewater treatment plants
- Heavy metals, e.g. cadmium, are separated for safe disposal
- Main product is a pure, non-crystalline calcium phosphate suitable as feed phosphate and fertiliser (brand name: RevoCaP)
- Co-products are ferric chloride, aluminium hydroxide or sodium aluminate, and a sand fraction



ASH2™ PHOS

Under construction



- Phosphorgewinnung Schkopau GmbH
 - Joint venture of EasyMining and Gelsenwasser
 - Annual capacity of 30,000t ash
 - Plant opening: 2027

- Plant in Helsingborg
 - Cooperation with Ragn-Sells
 - Annual capacity of 30,000t ash
 - Plant opening: 2029

ASH2™ SALT

Inaugurated in 2023



UPPLANDS-BRO ASH2™ SALT PLANT

FOOTPRINT: Plant 1,600 m², site 11,500 m²

CAPACITY: 150,000 tonnes/year

INAUGURATED: April 2023

What a waste!

...unless we do something about it.

Nutrient recovery works.

We make it happen.

From waste → product

From lab → plant

From idea → industry



THANK YOU

ANY QUESTIONS?

